

ENTRANCE TEST
UNIVERSITAS INDONESIA

SIMAK UI

SOCIAL SCIENCES TEST

- Basic Mathematics
- Economy
- Indonesia and the World A
- Indonesia and the World B
- Integrated Social Sciences

721



Universitas Indonesia
2012

GENERAL INSTRUCTIONS

1. Before you begin work on the test, check the number of questions and the page numbers in the test booklet.
The booklet consists of 13 pages.
2. Write your student test number on the space provided in the answer sheet.
3. Write the code of the test booklet on the space provided in the answer sheet. The code of this test booklet is: **721**
4. Read carefully each and every instruction on how to answer the questions.
5. Think carefully before answering every question, because incorrect answers will deduct points from your score (scoring system: correct +4, blank 0, incorrect -1).
6. Work on questions you find easy first, then continue with harder questions, so that all questions are answered.
7. Write your answers in the answer sheet provided.
8. For scrap paper, make use of the empty space in your test booklet and **do not use your answer sheet** as your answers will then fail to be processed
9. During the test, you are not allowed to ask or seek explanation about the questions being tested to anyone including the test supervisor.
10. When the test is complete, you are required to stay in your seat until the test supervisor approaches you to collect the answer sheet.
11. Make sure the answer sheet is not dirty, wet, folded, and torn.

SPECIFIC INSTRUCTIONS

INSTRUCTION A:

Choose one answer that it most appropriate

INSTRUCTION B:

The questions consist of 3 parts, i.e. STATEMENT, CAUSE, and REASON that are arranged in sequence. Choose:

- (A) If the statements is correct, the reason is correct, and both show a cause and effect relationship;
- (B) If the statements is correct, the reason is correct, but both do not show a cause and effect relationship
- (C) If the statements is correct and the reason is incorrect
- (D) If the statements is incorrect and the reason is correct
- (E) If the statements and the reason are both incorrect

INSTRUCTION C:

Choose

- (A) If (1), (2), and (3) are correct
- (B) If (1) and (3) are correct
- (C) If (2) and (4) are correct
- (D) If only (4) is correct
- (E) If all of them are correct

SUBJECTS	:	Basic Mathematics, Economy, Indonesia and the World A, Indonesia and the World B, and Integrated Social Sciences
EXAM DATE	:	1 JULY 2012
TIME	:	120 MINUTES
NO. OF QUESTIONS	:	80

Remarks	:	Questions on BASIC MATHEMATICS	number 1 to 20
		Questions on ECONOMY	number 21 to 35
		Questions on INDONESIA AND THE WORLD A	number 36 to 50
		Questions on INDONESIA AND THE WORLD B	number 51 to 65
		Questions on INTEGRATED SOCIAL SCIENCES	number 66 to 80

BASIC MATHEMATICS

Use **Instruction A** to answer questions number 1 to 19.

1. If ${}^3\log({}^3\log x) + {}^3\log({}^{27}\log x) = 1$, then ${}^x\log 9 = \dots$

- (A) $\frac{2}{3}$
 (B) $\frac{3}{2}$
 (C) 3
 (D) 9
 (E) 27

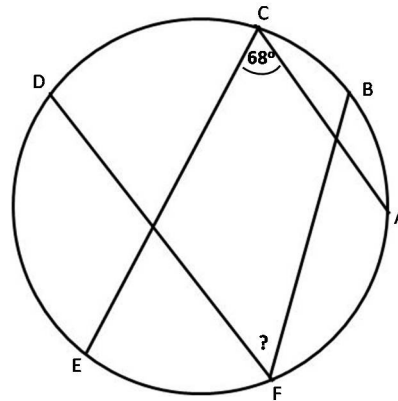
2. For all integer n greater than 1, define $a_n = ({}^n\log 32)^{-1}$. Let $b = a_2 + a_3 + a_4 + a_5$ and $c = a_2 + a_4 + a_6 + a_8 + a_{10}$. What is $b - c$?

- (A) -2
 (B) -1
 (C) $\frac{1}{32}$
 (D) $\frac{1}{16}$
 (E) 1

3. Three football teams are going to make a competition. Each team consists of 15 persons, including substitutes numbered 1 to 15. On the night before the competition, there was a snowstorm that covered the field to be used. To overcome this problem it was decided to set up a group consisting of 3 persons, each player from each team with different number was assigned to clean the snow-covered field. How many groups can be formed?

- (A) 45
 (B) 225
 (C) 625
 (D) 2250
 (E) 2730

4.



Put 6 points $A, B, C, D, E,$ and F on the circumference of a circle in such way that the following conditions are satisfied: arc AB and arc BC , arc CD and arc DE , and arc EF and arc FA have same lengths respectively. Determine the value of the angle BFD if angle $ACE = 68^\circ$.

- (A) 45°
 (B) 56°
 (C) 60°
 (D) 68°
 (E) 78°

5. Suppose $(x^2 + x - 1)^{x-2} = 1$, the number of solutions of the equation is

- (A) 1
 (B) 2
 (C) 3
 (D) 4
 (E) 5

6. Suppose $x^2 + px + q = 0$ with p and $q \neq 0$ has roots p and q . The new quadratic equation with roots $p + q$ and pq is
- (A) $x^2 - x - 2 = 0$
 (B) $x^2 - x + 2 = 0$
 (C) $x^2 + 2x - 1 = 0$
 (D) $x^2 + 3x + 2 = 0$
 (E) $x^2 - 3x + 2 = 0$
7. In a tournament with N players, $N < 10$, each player plays once against another player. Each player will have score 1 point for a win and 0 point for a loss. Draws do not occur. In a particular tournament, only one player ended with an odd number of points and was ranked fourth. How many wins did the player have?
- (A) 1 (D) 4
 (B) 2 (E) 5
 (C) 3
8. The sum of the 9-digit numbers SIMAK2011 and SIMAK2012 is 1278364023. What is $S + I + M + A + K$?
- (A) 10 (D) 32
 (B) 25 (E) 40
 (C) 27
9. For what real values a and b the maximum of $3a^2 + 2b$ and $3b^2 + 2a$ takes minimum values?
- (A) $a = -\frac{1}{3}, b = -\frac{2}{9}$
 (B) $a = -\frac{2}{9}, b = -\frac{1}{3}$
 (C) $a = b = -\frac{2}{9}$
 (D) $a = b = -\frac{1}{3}$
 (E) $a = \frac{1}{3}, b = -\frac{1}{3}$
10. For any real numbers α , $[\alpha]$ is defined as an integer greater than or equal to α . For example $[3.4] = 4$, and $[5] = 5$. If x and y are real numbers so that $[\sqrt{x}] = 4$ and $[\sqrt{y}] = 9$, then the largest possible value of $y - x$ satisfy
- (A) $y - x < 9$ (D) $y - x < 72$
 (B) $y - x < 16$ (E) $y - x < 81$
 (C) $y - x < 64$
11. Parabola $y = ax^2 + bx + c$ passes through the points $A(-2, 1)$ and $B(2, 9)$, and does not intersect x -axis. Find all possible values of x abscissa of the vertex of the parabola.
- (A) $-4 < x < -1$
 (B) $-4 < x < 1$
 (C) $\frac{1}{4} < x < 1$
 (D) $-4 \leq x \leq -1$
 (E) $-4 \leq x \leq 1$
12. Suppose that $f(x - 1) = 5x^2 - 2x + 6$ and $g(x) = ax^2 + bx + c$, where $g(x) = 2 - f(x)$. The value of abc is
- (A) -280 (D) 22
 (B) -20 (E) 280
 (C) 0
13. If $x > 0$ satisfies the equation ${}^2\log 3x + {}^4\log 9x + {}^8\log 27x - 2^{64}\log x = 3$, then the value of square root of x is
- (A) $\frac{1}{3}$
 (B) $\frac{2}{3}$
 (C) 1
 (D) $\frac{3}{2}$
 (E) 3
14. If M is a singular matrix satisfying $\begin{bmatrix} 2 & -1 \\ 5 & -3 \end{bmatrix} M = \begin{bmatrix} a-5 & 7 \\ -1 & a+3 \end{bmatrix}$. The product of a 's is
- (A) -8 (D) -2
 (B) 2 (E) 0
 (C) 8
15. The 8-th term of an arithmetic progression is 65 and the sum of the first 16 term is 1072. The sum of the first term and the common difference is
- (A) 33 (D) 45
 (B) 37 (E) 78
 (C) 41

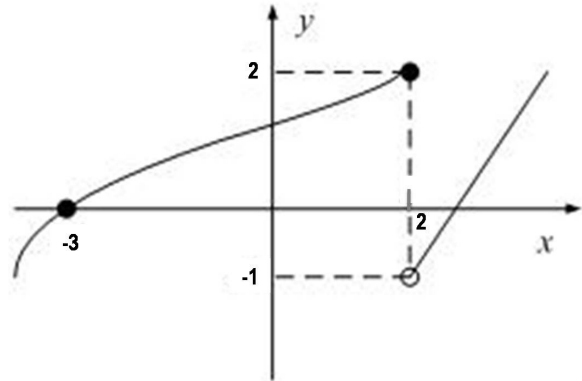
16. Given the consistent system:
$$\begin{cases} 3x + 4y = 10 \\ x - 2y = 5 \\ ax + by = 0 \end{cases}$$

The value of $\frac{b}{a}$ is

- (A) 8
 (B) $\frac{1}{8}$
 (C) $\frac{1}{2}$
 (D) -8
 (E) $-\frac{1}{8}$
17. Let $f(x) = 2 \sin 3x + c$, where c is a real number. Then $f(x) < 0$ for all real values of x if
- (A) $c \leq -2$ (D) $c > -2$
 (B) $c < -2$ (E) $-2 < c < 2$
 (C) $c = -2$
18. The first three terms of an arithmetic sequence are $4x - 5$, $2x + 6$, and $5x - 3$ respectively. If the n -th term of the sequence is 2012, then n equal to
- (A) 334 (D) 668
 (B) 502 (E) 1236
 (C) 667
19. Let x_1 and x_2 be distinct roots of the equation $x^2 - 6x + c = 0$. The roots together with c are arranged into an arithmetic sequence where c is the middle term. The value of $x_1 + x_2 + 3c$ is
- (A) 3 (D) 12
 (B) 6 (E) 15
 (C) 9

Use **Instruction C** to answer questions number 20.

20.



Given the graph of $f(x)$ above, then

- (1) $\lim_{x \rightarrow -3} f(x) = 0$
 (2) $\lim_{x \rightarrow 2^+} f(x) = 2$
 (3) $\lim_{x \rightarrow 2^-} f(x) = 2$
 (4) $f(2) = -1$

ECONOMY

Use **Instruction A** to answer questions number 21 to 28.

21. Suppose the market demand for pizza is given by $P = 5 - Q$ and the market supply for pizza is given by $P = 1 + 0.5Q$. If the government imposes tax of Rp1.00/unit of pizza, the equilibrium point Q and P after tax is
- (A) (6; 5) (D) (3; 2)
(B) (5; 6) (E) (2; 3)
(C) (4.5; 0.5)
22. The CORRECT formula to calculate the unemployment rate is
- (A) sum of all unemployed people
(B) (the number of people unemployed divided by the total population) $\times 100\%$
(C) (the number of people unemployed divided by the population of 15 - 64 year old) $\times 100\%$
(D) (the number of people unemployed people divided by the total labor force) $\times 100\%$
(E) (the number of people unemployed divided by the number of people employed) $\times 100\%$
23. Suppose P = price, D = demand, MR = marginal revenue, AR = average revenue, AFC = average fixed cost, AVC = average variable cost, MC = marginal cost. In the long run, a profit-maximizing firm in a perfectly competitive industry will produce up to the point at which
- (A) $P = AFC = D$
(B) $P = MR = \text{minimum } AVC$
(C) $P = MR = D = \text{minimum } AC$
(D) $P = MR = MC = \text{minimum } AC$
(E) $P = MR = AR = D$
24. The total product (TP) is maximum when
- (A) the average product (AP) = 0
(B) the marginal product (MP) = 0
(C) the MP is minimum
(D) the total revenue (TR) is maximum
(E) the average cost (AC) is minimum
25. The following monetary policy is not designed to control inflation is
- (A) increasing discount rate
(B) selective credit control
(C) increasing reserve requirement ratio
(D) an open market sale bonds/securities by the Central Bank
(E) an open market purchase of bonds/securities by the Central Bank
26. A perfect competitive firm might operate at a loss in the short run, if
- (A) the loss is minimum
(B) the marginal revenue is greater than its marginal cost
(C) the price of the good is below average variable cost
(D) the price of the good is less than average total cost but greater than average variable cost
(E) the price of the good is greater than the marginal cost
27. The total revenue of luxurious good may increase, ceteris paribus, if producer
- (A) decreases the price, because the elasticity of demand for luxurious good is inelastic
(B) decreases the price, because the elasticity of demand for luxurious good is elastic
(C) increases the price, because the elasticity of demand for luxurious good is inelastic
(D) increases the price, because the elasticity of demand for luxurious good is elastic
(E) increases the price, because the income elasticity of demand for luxurious good is greater than one

28. GDP by the production approach can be computed by adding of
- (A) the income received by all factors of production located within a country during a given period
 - (B) the value of goods and services produced by all industries owned by domestic and foreign firms located within a country during a given period
 - (C) the value of goods and services produced by all industries owned by a country's citizen regardless of where the output is produced during a given period
 - (D) the value added of goods and services produced by all industries located within a country during a given period
 - (E) consumption, investment, government expenditure, and net export during a given period

Use **Instruction B** to answer questions number 29 to 32.

29. If the price of good with inelastic demand increases, the total revenue will increase.

BECAUSE

Demand for basic necessities is inelastic by nature.

30. Cost-push inflation is shown by the shift of the aggregate demand curve to the right.

BECAUSE

Total cost is the sum of total fixed cost and total variable cost.

31. Engel curve for inferior good would increase from the lower left to the upper right, that is, a curve that shows the correlation between the level of income and the total consumption of good.

BECAUSE

Inferior goods are all goods which is the coefficient of income elasticity of demand is greater than zero.

32. When the money supply increases, while the demand for money remains unchanged, the interest rate will decrease.

BECAUSE

The lower interest rate will increase the investment spending.

Use **Instruction C** to answer questions number 33 to 35.

33. The following statement(s) is/are INCORRECT relation to production cost.
- (1) Average fixed cost curve goes down from left to lower right
 - (2) Total cost equal to average cost times total output
 - (3) Marginal cost curve always intersects average variable cost curve at its minimum point
 - (4) Marginal cost curve always rises from lower left to upper right
34. The easy money policy may be conducted by
- (1) purchasing of *Sertifikat Bank Indonesia* (SBI)
 - (2) increasing the reserve requirement ratio
 - (3) lowering the discount rate
 - (4) implementing selective credit control
35. The equilibrium price of good may change due to changing in
- (1) consumers income
 - (2) production cost
 - (3) number of producers
 - (4) price of good

INDONESIA AND THE WORLD A

Use **Instruction A** to answer questions number 36 to 45.

36. The Allied nation(s) that was/were given mandate to control Indonesian territory after World War II based on Postdam agreement was/were
- (A) The UK and Australia
 - (B) Australia
 - (C) The UK and Netherlands
 - (D) Netherlands
 - (E) The UK
37. Japan's involvement in the World War II was based on their belief in Hakko Ichiu doctrine that was developed from the idea of
- (A) freeing the Asian people from Western colonialism.
 - (B) celebrating Japan's victory over Russia in the 1905 war.
 - (C) Japan not having sufficient natural resources..
 - (D) making Asian nations under the leadership of Japan.
 - (E) Japan's ability to lead Asian people due to its supremacy in the military and origin of its people.
38. The legal ground for sending Garuda mission to Egyptian territory was the consequence for
- (A) being a member of the UN
 - (B) fostering solidarity among members of Asia Africa Conference
 - (C) fostering solidarity as the majority of the Egyptians are Moslem
 - (D) implementing foreign policy and the preamble of the 1945 Constitution
 - (E) Egypt being the first country that acknowledged Indonesian independence
39. Versailles agreement that ended World War I triggered off World War II. This was because
- (A) German armed forces had to be extended.
 - (B) German merchant vessels had to sail to Balkan Peninsula.
 - (C) The agreement was detrimental to Germany.
 - (D) Germany became a powerful country.
 - (E) Germany had to surrender parts of its regions to the allied nations.
40. One of the particular characteristics of *perundagian* period was that the society members
- (A) had not recognized work division
 - (B) developed special skill
 - (C) had not recognized discrimination in status
 - (D) was nomadic
 - (E) gathered food
41. One of the characteristics of renaissance period in Europe was that it
- (A) promoted freedom of thought
 - (B) was heavenly in nature
 - (C) emphasized the afterlife
 - (D) was against the freedom of thought
 - (E) encouraged absolute power
42. Indonesia has tried to solve the problem on Cambodia by
- (A) holding the 10th Conference of the Non-Aligned Movement
 - (B) sending Garuda IX troops
 - (C) holding *Jakarta Informal Meeting*
 - (D) insisting UN to deal with the problem
 - (E) sending economic and military assistances
43. The intervention of western countries in NATO was very strong in the 1992 Gulf crisis because
- (A) the western countries had diplomatic relations with Kuwait.
 - (B) the western countries had economical and political interests in the Middle East region.
 - (C) Iraq invasion to Kuwait was against UN charter.
 - (D) the western countries were against the Sadam Husein's regime.
 - (E) they wanted to test their most up to date arms if war should break up.

44. The development of nasionalism in Europe triggered the outbreak of World War I. This was because nasionalism
- (A) promoted the practice of colonialism
 - (B) brought about competition among the trading companies
 - (C) encouraged the colonized nations to liberate themselves
 - (D) worsened the competition between Germany and Italy
 - (E) enhanced the spirit of freedom
45. The reason behind the establishment of League of Nations was
- (A) to isolate countries that were defeated in the war
 - (B) to prevent the occurrence of world war that was harmful to human race
 - (C) to supervise cease fire between conflicting countries
 - (D) American's effort to become the world's police
 - (E) to lessen conflict on ideology

Use **Instruction B** to answer questions number 46 to 47.

46. Renaissance period resulted in knowledge lag in Europe.

BECAUSE

During the renaissance period Europe was controlled by ecclesiastic group so that freedom of thought was restricted.

47. *Apartheid* politics means segregation and discrimination based on skin color.

BECAUSE

Apartheid system teaches that every race has its own mission and must give cultural contribution to the world.

Use **Instruction C** to answer questions number 48 to 50.

48. Unequal allocation of development fund during the period of liberal democracy resulted in rebellions in various parts of Indonesia, namely
- (1) RMS
 - (2) Andi Aziz
 - (3) Kahar Muzakkar
 - (4) PRRI/Permesta
49. The following factor(s) encourage(s) industrial revolution in the UK
- (1) scientific revolution
 - (2) stability in domestic political situation
 - (3) emergence of the ideology of liberal economy
 - (4) the emergence of public interest on manufacture industry
50. The following option(s) is/are the form(s) of Cold War
- (1) arms race
 - (2) the emergence alliance system
 - (3) espionage activity
 - (4) race in space technology

INDONESIA AND THE WORLD B

Use **Instruction A** to answer questions number 51 to 61.

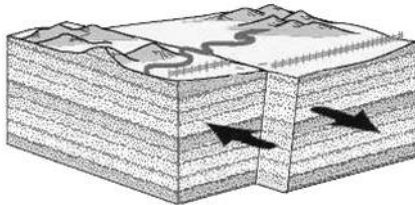
51. Population growth in Bogor - Tangerang - Bekasi areas have caused an increase in spatial needs, especially a need for the following

(A) shopping center
 (B) housing complex
 (C) trade
 (D) health facilities
 (E) road system

52. A GIS is a computer based system that provides four of the following capabilities relative to spatial data, EXCEPT

(A) analysis (D) output
 (B) collection (E) builder
 (C) input

53.



In an active fault, the continual motion of the pieces of the Earth's crust along a fault can cause earthquakes. Which one of the following terms correspond to the figure?

(A) normal fault
 (B) lateral fault
 (C) synformal syncline
 (D) reverse fault
 (E) transform fault

54. What is the most likely reason why typhoons are rarely observed over the areas near equator?

(A) Annual variation of sea surface temperature is small.
 (B) Monthly average temperature is high.
 (C) Pressure is weak.
 (D) Sea surface temperature is high.
 (E) Coriolis force is too small.

55. Which one of the followings is truly considered as vector data?

(A) vegetation and land use maps
 (B) air photographs and satellite images
 (C) distribution and density of population
 (D) postal codes and addresses
 (E) points, lines and polygons

56. Karst topography in Indonesia is found mainly in

(A) Jakarta and Cilegon
 (B) Bukittinggi and Padang
 (C) Balikpapan and Samarinda
 (D) Gunung Kidul and Maros
 (E) Denpasar and Lombok

57. A relatively new remote sensing technology that utilizes an airborne laser to transmit light out to an object is known as

(A) imaging system
 (B) global positioning systems
 (C) radar
 (D) lidar
 (E) thermal scanning

58. Which one of the followings correctly lists the four main sources of distortion in flat maps?

(A) direction, conformality, scale, datum
 (B) graphics, mercator, charts, themes
 (C) area, shape, distance, direction
 (D) conformality, equivalence, direction, symbology
 (E) area, direction, latitude, longitude

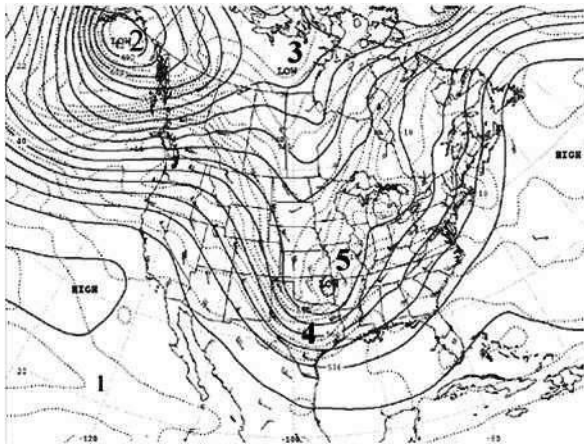
59. A stream that existed before the present topography was created, thereby maintaining its original course despite changes in the structure of the underlying rocks and topography, is referred as

(A) braided stream
 (B) antecedent stream
 (C) subsident stream
 (D) superposed stream
 (E) radial stream

60. The zone around the margin of the Pacific Ocean is marked by the edge of tectonic plates with high levels of volcanic and earthquake activity. What is the name of the zone where the plate edges are marked by some of the world's deepest ocean troughs?

- (A) Old World Medial belt
- (B) Circum-Australia belt
- (C) Circum-Pacific belt
- (D) Circum-Asia belt
- (E) Circum-Sunda belt

61.



The picture above is a map of pressure at about 18,000 feet above sea-level over the Gulf of Alaska where the lines (called "contours") are close together. From the picture, which wind speed is the fastest?

- (A) 1
- (B) 2
- (C) 3
- (D) 4
- (E) 5

Use **Instruction B** to answer questions number 62 .

62. Mass wasting covers all processes by which masses of rock and soil move downhill under the influence of gravity, eventually to be carried away by other transporting agents.

BECAUSE

The steepness and instability of slopes, the amount of water in materials, and the nature of the slopes, contribute to the tendency of materials to fall, slide or flow under various conditions.

Use **Instruction C** to answer questions number 63 to 65.

63. Isostatic uplift is a rise in the level of the land relative to the sea caused by the relaxation of Ice Age conditions. This occurs when ...

- (1) The weight of ice is removed as temperatures rise
- (2) The weight of ice is removed as temperatures down
- (3) The landscape is raised up to form raised beaches
- (4) The landscape is raised up to form the hill along the beaches

64. Most population in Southeast Asia regions and China are concentrated in the following areas

- (1) rural highlands
- (2) coastal lowlands
- (3) plateau highlands
- (4) river valleys and deltas

65. The main growth centers for eastern Indonesia regions include the following cities

- (1) Denpasar and Manado
- (2) Ambon and Kupang
- (3) Jayapura and Makasar
- (4) Surabaya and Makasar

INTEGRATED SOCIAL SCIENCES

The increase in the life expectancy has resulted in the increase in the number of population with the age above 60 years old, i.e. senior citizen group. However, the government has not shown its concern to provide facilities for them so that they may lead a better life.

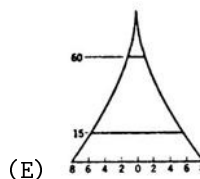
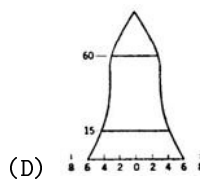
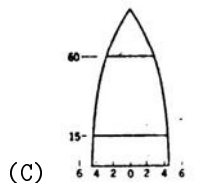
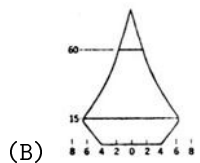
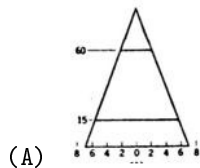
The total number of senior citizens in Indonesia in 2011 was around 24 million people or nearly 10% of the total population. In 1970 there were only 2 million senior citizens. Within 40 years, the number of senior citizens has increased by 10 times, while the number of population has increased by 450,000 people in average. In 2050, it is predicted there will be 60 million senior citizens, equal to the current joint population of West Java, DKI Jakarta and Banten.

The increase in the number of senior citizens has greater impacts, from political, economic, up to sociocultural aspects. The senior citizens' political aspiration will be more decisive. There will be more products produced by industries for senior citizens. Almost every family will have senior citizens. Based on population distribution, 80% of senior citizens will live in rural areas. This is dangerous to food resistance program because agricultural sector is dominated by senior citizens who are not productive anymore. Now, the average age of farmers is 45 years old. The baby boom that happened between 1960 and 1970 will trigger the explosion of the number of senior citizens in the next 10 – 20 years. In the next 5 years, it is estimated that there will be 2 million civil servants who will reach retirement age.

From the age of 50 years old, senior citizens should start preparing themselves to enter retirement period. There should be empowerment program because around 60% of senior citizens have the potential to be developed. There are 20% senior citizens who are still active and independent, so they do not need assistance. The remaining 20% are those who are sick, poor, and unable to do anything.

Use **Instruction A** to answer questions number 66 to 69.

66. The following population pyramids that shows low level of burden dependency is



67. The number of senior citizens who are sick, poor and unable to do anything and live in rural areas in 2050 will be

- (A) 48 million people
(B) 24 million people
(C) 12 million people
(D) 9.6 million people
(E) 7.2 million people

68. Increase in the number of senior citizens as stated in the first and second paragraphs of the above reading

- (A) resulted in the decrease of income per capita
(B) resulted in the increase in the number of unemployment
(C) resulted in higher burden on dependency
(D) resulted in additional APBN expenditure
(E) showed the success of family planning program

69. In the next five years, the contribution of retired civil servants will be ... percent relative to additional total number of senior citizens in the same period.

- (A) 8.33
(B) 16.67
(C) 33.33
(D) 44.44
(E) 88.89

Use **Instruction B** to answer questions number 70 .

70. It is mentioned in the text that between 17th and 18th century, the Kingdom of Banten prospered due to pepper trading.

BECAUSE

The Kingdom of Banten was one of the largest pepper producers besides Palembang and Banjarmasin.

Starting from 28 January 2012, the United States of America has formally rejected oil palm products and its derivatives from Indonesia. The reason was, the Indonesian oil palm was considered as environmentally unfriendly product. The notification was received by the Ministry of Trade and we were given time until 27 February to go against the statement.

The government immediately looked for support from other countries that also consumed palm oil such as Finland. The Ministry of Forestry had also carried out a study with the European Community related to palm oil contribution to the emission of carbon.

The US rejection on oil palm product has undermined the competitiveness of Indonesian products. This rejection is similar on ban imposed by the European Community. According to the US, bio fuel from oil palm does not fulfill requirements on harmless emission. The safety level of the emission of Indonesia's palm oil is only 18 percent, while the minimum requirement is 25 percent. In Europe, the emission minimum safety is 35 percent, whereas the Indonesia's palm oil is only rated 21%. The figures are predetermined only by the US and the European Countries by applying inaccurate calculation and assumption in view of Indonesian condition.

Classification of crude palm oil/CPO as environmentally unfriendly product, if not handled properly will result in the rejection of Indonesian export. Indonesian CPO export value to the US is relatively small so the US is grouped with other countries with export value under USD500,000,000. The US market is not significant, but still, we have to make serious response because they applied several inaccurate data and assumption.

Use **Instruction A** to answer questions number 71 to 73.

Use **Instruction B** to answer questions number 74 to 75.

71. Rejection of palm oil product in the USA undermined the Indonesian palm oil competitiveness because of the followings, EXCEPT

- (A) reduction in the export of palm oil
- (B) high tax can be imposed
- (C) unpleasant publication for Indonesia
- (D) reduction in the country's reserve
- (E) additional areas of oil palm plantation

72. CPO is a raw material in bath soap production. The rejection of the United States of America's to our CPO has caused reduction in the price of CPO domestically. This will result in

- (A) demand curve for CPO shifts to the right.
- (B) demand curve for CPO shifts to the left.
- (C) demand curve for bath soap shifts to the left.
- (D) supply curve for bath soap shifts to the right.
- (E) supply curve for bath soap shifts to the left.

73. If a , b , c , and d in sequence in line with the above reading are numbers in percentage in the third paragraph, then the value of $x + 3y$ from the following equation is

$$\begin{bmatrix} a & b \\ c & d \end{bmatrix} \begin{bmatrix} x \\ y \end{bmatrix} = \begin{bmatrix} 2b + 7 \\ c - 7 \end{bmatrix}$$

- (A) -10
- (B) -8
- (C) 0
- (D) 8
- (E) 10

74. When the UK joined the European Common Market in 1972, it given huge impact to the organization.

BECAUSE

The UK has a special form of cooperation with its former colonies, the Commonwealth, comprising of 31 countries.

75. After World War II, all countries in Europe were able to quickly recover and became industrial countries.

BECAUSE

After World War II, all European countries received Marshal Plant financial assistance from the United States of America.

Seven Indonesian mangrove forests become model forests in ASEAN although almost half of the total areas are in damaged condition. It is easy to find the sample, because North Jakarta coastal region is completely changed to a luxurious housing area. More than half of our mangrove forests are damaged, and the remainder is in good and in moderate conditions. However, 70% of the damaged are outside the forest area and only 28% are in the forest area.

Based on the result of the Ministry of Forestry's survey in 2006, Indonesia had the largest area of mangrove forests in South East Asia, i.e. 7.7 million hectares. However, when survey was carried out last year, the mangrove forests in Indonesia which were in good conditions were only 3.6 million hectares, the remainder was either in the damaged or moderate condition. The damage of the mangrove forests was due to the conversion of their utilization to farms, rearing ponds, and economic development (housing, paddy fields) and planned cuttings as well as natural disasters. Meanwhile, the economic value that can be gained from the preservation of mangrove per hectare is quite high. If all is calculated in Rupiah, the value reaches Rp1.6 billion per ha per year.

To rescue the damaged mangrove, rehabilitation of 10,000 hectare of mangrove forest is carried out every year. In addition, in the APBN (Annual State Budget), budget is also allocated for the development of People Seed Nursery (Kebun Bibit Rakyat – KBR). In 2011, it was budgeted to establish 10,000 units KBR that can produce 500 million mangrove trees. In 2010 only 8,000 units of KBR, while in 2012 there will be 12,000 units.

The Ministry of Forestry is optimistic that Indonesian mangrove forests will be restored. In the survey that is carried out every five years, it is stated that there will be additional 200,000 hectares of good mangrove forest. The criterion of a good mangrove forest is that there are more than 1,000 mangrove trees per hectare. If a mangrove forest is damaged, there are only fewer than 400 mangrove trees per hectare in this area.

For that purpose, seven mangrove forests in Indonesia will become a model in the ASEAN region. The seven mangrove forests that will apply share learning mechanism are located in Surabaya, Lampung, West Bali, Alas Purwo (Banyuwangi), Balikpapan, Tarakan, and Jepara.

Use **Instruction A** to answer questions number 76 .

76. Value of economic loss due to the damaged of mangrove forest in 2011 was

- (A) Rp 0.656 trillion
- (B) Rp 6.56 trillion
- (C) Rp 65.6 trillion
- (D) Rp 656 trillion
- (E) Rp 6,560 trillion

Use **Instruction B** to answer questions number 77 to 78.

77. Mangrove forests in Tarakan will be gradually gone as expected.

BECAUSE

Sediment as the place for mangrove trees to grow has increased in its thickness beyond the reach of brackish water.

78. Budget allocated to build 12,000 units of KBR in 2012 which continued to increase compared to the previous year (10,000 units of KBR) as stated in the third paragraph will result deficit in APBN.

BECAUSE

Deficit in APBN will increase inflation rate.

Use **Instruction C** to answer questions number 79 to 80.

79. The organization in the first paragraph was established based on Pattaya's convention. The leading figures of the countries attending the meeting believed that the South East Asian Nations had

- (1) similarity of interest
- (2) similarity of problems faced
- (3) the importance of cooperation between the South East Asian nations
- (4) solidarity among the South East Asian nations

80. Mangrove forest can grow because of

- (1) calm water
- (2) brackish water
- (3) there is mud sediment
- (4) there is water current